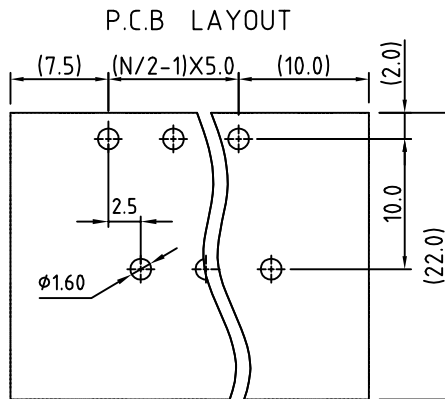
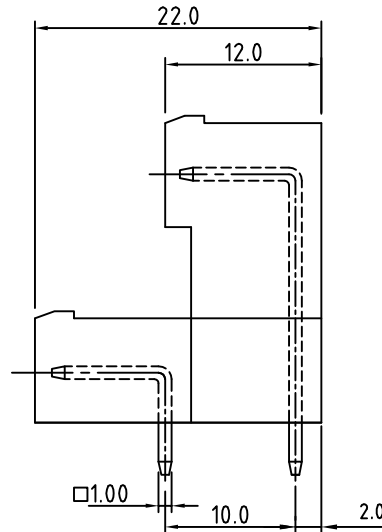
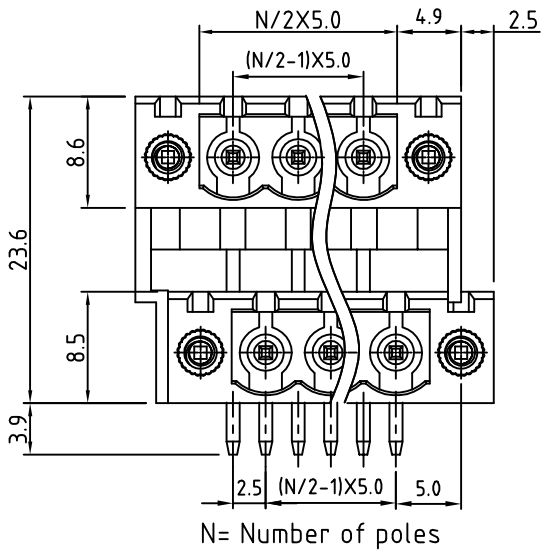
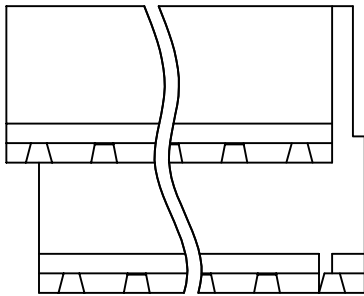


SIGN	DATE	DESCRIPTION	APPROVER
		<i>THIS IS CAD DRAWING, DO NOT REVISE MANUALLY!!!</i>	



**Material**

- Contact pin: Brass
- Surface of solder tail: Tin plated
- With flange nut: brass M2.5
- Insulator (housing): Thermoplastic (UL94V-0)

**Electrical**

- Voltage rating: 300VAC
  - Current rating: 15A
  - Withstanding Voltage: 1.6KV
  - Operating temperature: -30°C to +105°C
  - Soldering temperature: 250°C±10°C/5 Sec
  - Safety approval: (cULus) pending
- RoHS Compliant

PART NUMBER:

**OSTVFXX7251**

- |                |                     |
|----------------|---------------------|
| No. of Poles   | COLOR               |
| 04: 2x02 Poles | 0: Black            |
| 06: 2x03 Poles | 5: Green (Standard) |
| :              | 6: Blue             |
| 48: 2x24 Poles | 8: Grey             |

THESE DRAWINGS AND SPECIFICATIONS ARE THE PROPERTY OF ON-SHORE TECHNOLOGY, INC. AND SHALL NOT BE REPRODUCED, COPIED OR USED IN ANY MANNER WITHOUT THE PRIOR WRITTEN CONSENT OF ON-SHORE TECHNOLOGY, INC.



TITLE		OSTVF-5.0mm series W/F right-angle 2x2p-2x24p					
PART NO.		OSTVFXX7251			DWG NO.		OSTVFXX7251.DWG
APPROVED	CHECKED	DESIGNED	DRAWN	CUST NO.	Tolerance		
Shi Jun 2006.11.07	Marvin 2006.11.07	Marvin 2006.11.07	Marvin 2006.11.07		UNIT: mm	X.	±0.50
					SCALE: NONE	X.X	±0.30
				SHEET: 01/01	REV: B	X.XX	±0.10
						X°	±1°